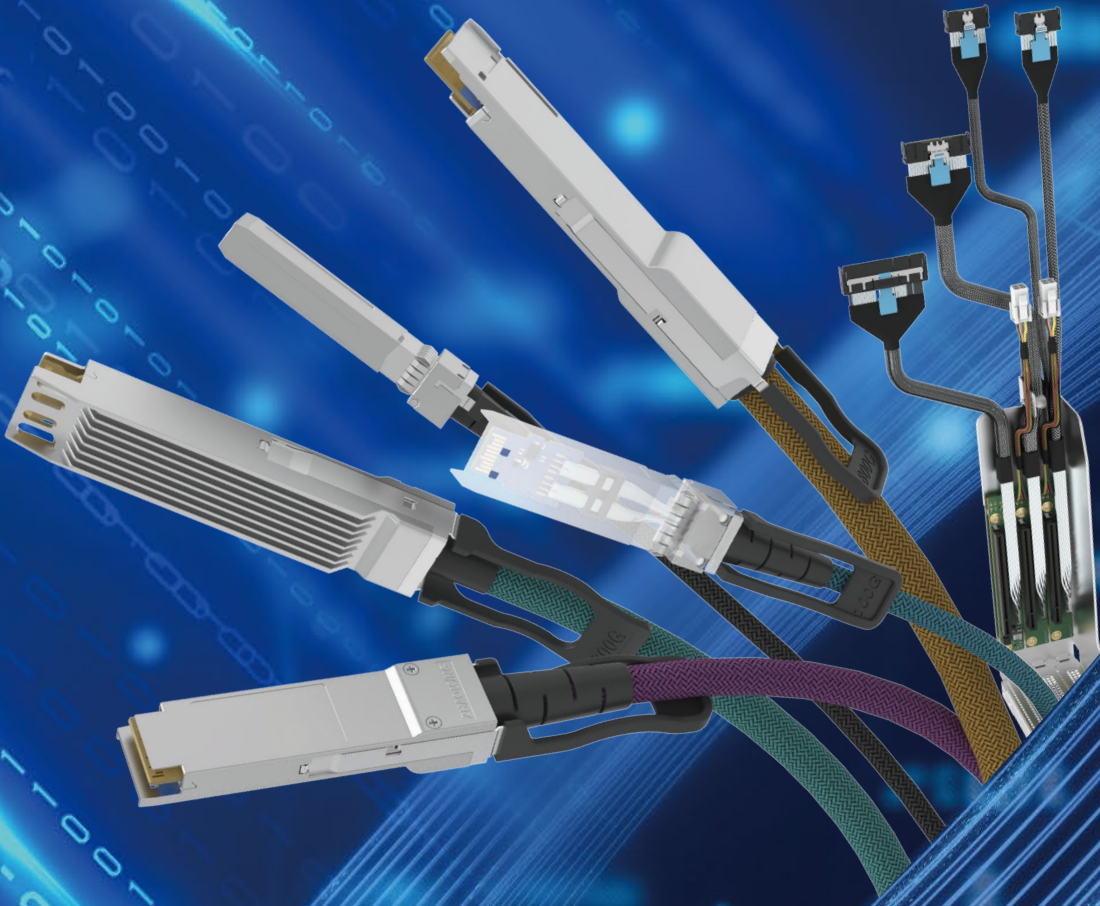


# 高速互连解决方案

High-Speed Interconnect Solution



# IMPRESSION OF ZHAOLONG

## HIGH SPEED INTERCONNECT 高速互连事业部

兆龙互连 (SZ.300913) 创建于 1993 年, 是专业从事数据线缆、专用线缆和连接产品设计, 制造与销售的高新技术企业, 是中国通信标准化协会全权会员、数据电缆国家标准起草单位。

兆龙为客户提供完整的高速互连解决方案, 研发人员可提供完整的 SI 分析和运用仿真来准确的预测产品性能, 同时与您共同开发解决方案, 实现速度、信号完整性、功耗与热管理的平衡, 我们的高密度、高带宽设计符合包括 SAS、PCIe、SATA、InfiniBand™ 和以太网在内的渐进标准的要求。

兆龙致力于不断发展我们在 EMC 分析和测试方面的能力, 为产品进行多种类型的 EMC 测试, 并将结果与 EMC 分析技术和在电磁理论方面的专业知识相结合, 为您提供服务器, 存储设备, 路由器, 交换机, 移动通信基础设施, RAID, 工作站, 高速网络接口等相互间的系列高速线缆组件产品。

快速、灵活的为客户服务, 可提供客户深度定制化要求, 并可实现快速交付, 可靠品质, 可追溯性等一系列增值服务。



连接美好未来

## 企业文化 CULTURE

### 使命 MISSION

为顾客提供价值  
DELIVER VALUE TO CUSTOMERS  
为社会创造财富  
CREATE WEALTH FOR SOCIETY

### 愿景 VISION

成为世界先进的  
BE WORLD ADVANCED DATA CABLES, DEDICATED CABLES  
AND CONNECTION PRODUCTS DESIGN  
的数据线缆·专用线缆和连接产品  
的设计与制造企业  
AND MANUFACTURING ENTERPRISES

### 价值观 VALUE

专注 FOCUS	创新 INNOVATION	品质 QUALITY
诚信 INTEGRITY	快速 RAPID	可持续 SUSTAINABLE

### 服务理念 SERVICE CONCEPT

用生生不息的创意  
WITH ENDLESS CREATIVITY  
让我们的顾客满意  
KEEPING THE CUSTOMERS SATISFIED

Originated in 1993, Zhejiang Zhaolong Interconnect technology Co., Ltd. a High-Tech Enterprise specializing in the design, manufacture and sale of data cable and cable assemblies. Serving as the member of China Communications Standards Association, we also devoted to participation in drafting national standards for data cables.

Zhaolong provides various services to high-speed interconnection solutions for customer needs. During new product development, our engineer team is capable to provide Signal Integration simulation and analysis performance to achieve the targeted balance of transmitting speed, signal integrity, power consumption and thermal management. This can help us to design higher density, higher bandwidth products to meet the updating requirements of SAS, PCIe, SATA, InfiniBand™ and Ethernet.

Zhaolong is also committed to develop our EMC test and analyze abilities. With consideration of multiple EMC testing results together with electromagnetic theory, we are enabled to provide our high-speed cable assembly solutions for applications of Servers, Storages, Routers, Switches, Mobile communication infrastructure, RAID, Workstation and high-speed Ethernet and etc.

We can provide excellent customer services, customized product capabilities, reliable quality with complete product traceability.

# INNOVATION DRIVES DEVELOPMENT

创新·驱动发展



浙江省企业技术中心

浙江省企业技术中心



- 产品设计 / Product Design
- 硬件电路 / Hardware Circuit Design
- SI 仿真 / SI Simulation
- 模流分析 / Mold Flow Analysis
- 应力分析 / Stress Analysis
- 电路设计布局 / Schematics & Layout
- 机构设计 / Mechanical

## 研发团队 / R&D Team Member

100 多人的研发团队 / More than 100 R&D team

### 带队专家: /Leading Experts

博士 / PhD IEEE 高级会员 /Senior member of IEEE

资深工程师 /Senior Engineer

中国通信光电缆专家委员会委员  
/Member of Optical and Cable Expert Committee of China

### 资深教授: /Senior Prof

IEEE 会士 /IEEE Fellow

清华大学材料学院教授  
/Professor, School of Materials Science, Tsinghua University

上海电缆研究所教授级高工  
/Professor-level senior engineer of Shanghai Cable Research Institute

浙江大学信电学院教授  
/Professor, School of Information and Electronics, Zhejiang University



信号完整性测试 / Signal Integrity

环境测试 / Environment

电子测试 / Electrical



# ABSORPTION MAKES PROFESSION

专业·源于专注

## 优质高效·诚实守信

High quality, efficient, honest and trustworthy



### 智能制造

INTELLIGENT MANUFACTURING

- 企业网资源规划系统 EPR
- 制造执行系统 MES
- 条码追溯系统 Barcode Traceability System



高速裸线车间 / High Speed Raw Cable Workshop

物料条码追溯系统 / Barcode Traceability System

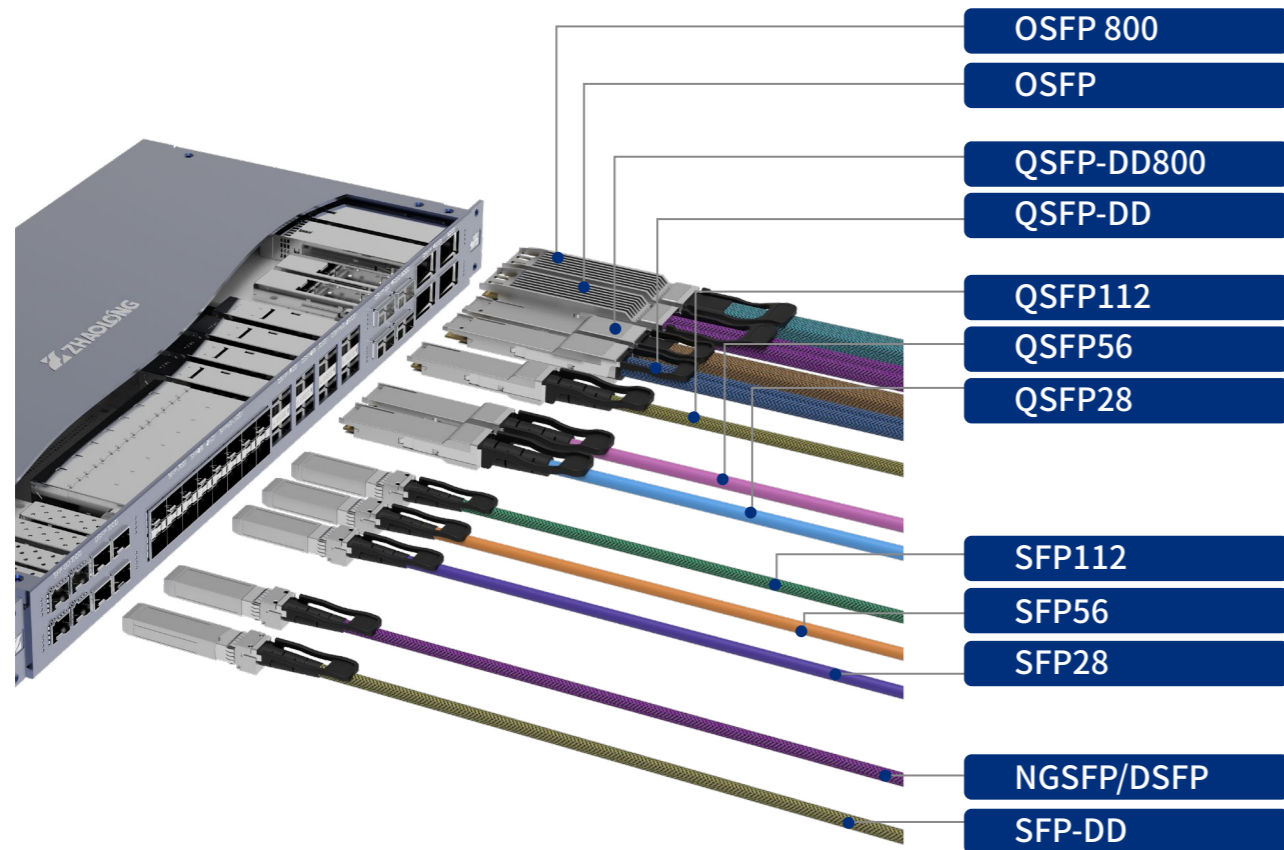


组件车间 / Cable Assembly Workshop

MES 生产管理 / MES System Control

# 以太网高速互连

Ethernet Application



提供 10G/25G/40G/100G/200G/400G/800Gbps  
 高速无源 / 有源连接解决方案  
 高速率、低功耗  
 支持当前以太网各种速率协议应用

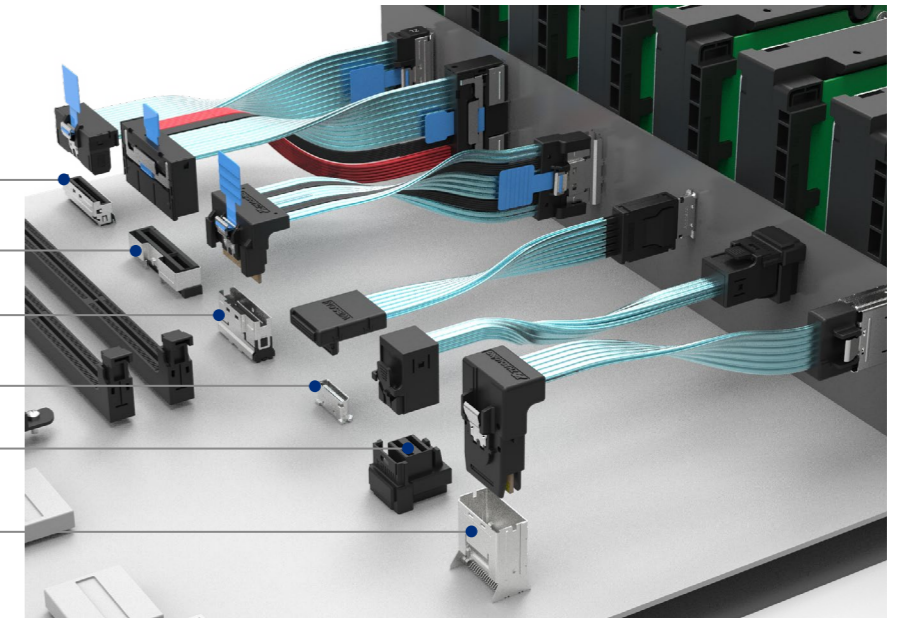
Provide DAC/ ACC For 10G/25G/40G/100G/200G/400G/800Gbps Application  
 High speed, low power consumption  
 Support applications of the current Ethernet protocols at various transmission rates



# 服务器内部互连

Sever/Storage Application

- SFF-TA 1016 MCIO
- SFF-TA 1020 Gen-Z
- SFF-8654 SlimSAS
- SFF-8611 OCuLink
- SFF-8613 Miini SAS HD
- SFF-8087 Mini SAS



帮助服务器满足更高的带宽和更好的热性能管理。  
 支持通用式，机架式，刀片式服务器应用。  
 支持深度定制，更高密，更高速，更节能。  
 通过主流行业标准协议，快速、无缝、安全的传输数据。




Help servers meet the demands for higher bandwidth and better thermal performance management.  
 Support applications of general-purpose, rack-mount, blade servers.  
 Support customization of higher-density, higher-speed, and more energy-saving products.  
 Fast, seamless and secure data transfer via the standard protocols of the mainstream industry.



# 外部高速线

External High Speed Cable

## DAC (Direct Attach Copper Cable)

<b>OSFP800</b> <b>OSFP</b>	PAM4-800G PAM4-400G NRZ-200G	OSFP to OSFP	OSFP to 2*QSFP	OSFP to 8*SFP	
					
<b>QSFP-DD800</b> <b>QSFP-DD</b>	PAM4-800G PAM4-400G NRZ-200G	QSFP-DD to QSFP-DD	QSFP-DD to 2*QSFP	QSFP-DD to 8*SFP	
					
<b>QSFP112</b> <b>QSFP56</b> <b>QSFP28</b> <b>QSFP+</b>	PAM4-400G PAM4-200G NRZ-100G NRZ-40G	QSFP to QSFP	QSFP to 2*QSFP	QSFP to 4*SFP	
					
<b>NGSFP</b> <b>(DSFP)</b>	PAM4-100G	NGSFP to NGSFP (100G to 100G)	QSFP56 to 2*NGSFP (200G to 2*100G)	QSFP-DD to 4*NGSFP (400G to 4*100G)	OSFP to 4*NGSFP (400G to 4*100G)
					
<b>SFP-DD</b>	PAM4-100G	SFP-DD to SFP-DD (100G to 100G)	QSFP56 to 2*SFP-DD (200G to 2*100G)	QSFP-DD to 4*SFP-DD (400G to 4*100G)	OSFP to 4*SFP-DD (400G to 4*100G)
					
<b>SFP112</b> <b>SFP56</b> <b>SFP28</b> <b>SFP+</b>	PAM4-100G PAM4-50G NRZ-25G NRZ-10G	SFP112 to SFP112	SFP56 to SFP56	SFP28 to SFP 28	SFP+ to SFP+
					

# 外部高速线

External High Speed Cable

## ACC (Active Redriver Copper Cable)

SFP112/SFP56(28)	NGSFP(DSFP)	QSFP-112/QSFP	QSFP-DD800/QSFP-DD	OSFP 800/400
				

## Shielded Mini SAS HD (SFF-8614/SFF-8644/SFF-8674)

HD 4X 36Pos to HD 4X 36Pos (SAS/PCIe Application)	HD 8X 72Pos to HD 8X 72Pos (SAS/PCIe Application)	HD 8X to 2* HD 4X (SAS/PCIe Application)
		

## AOC (Active Optical Cable)

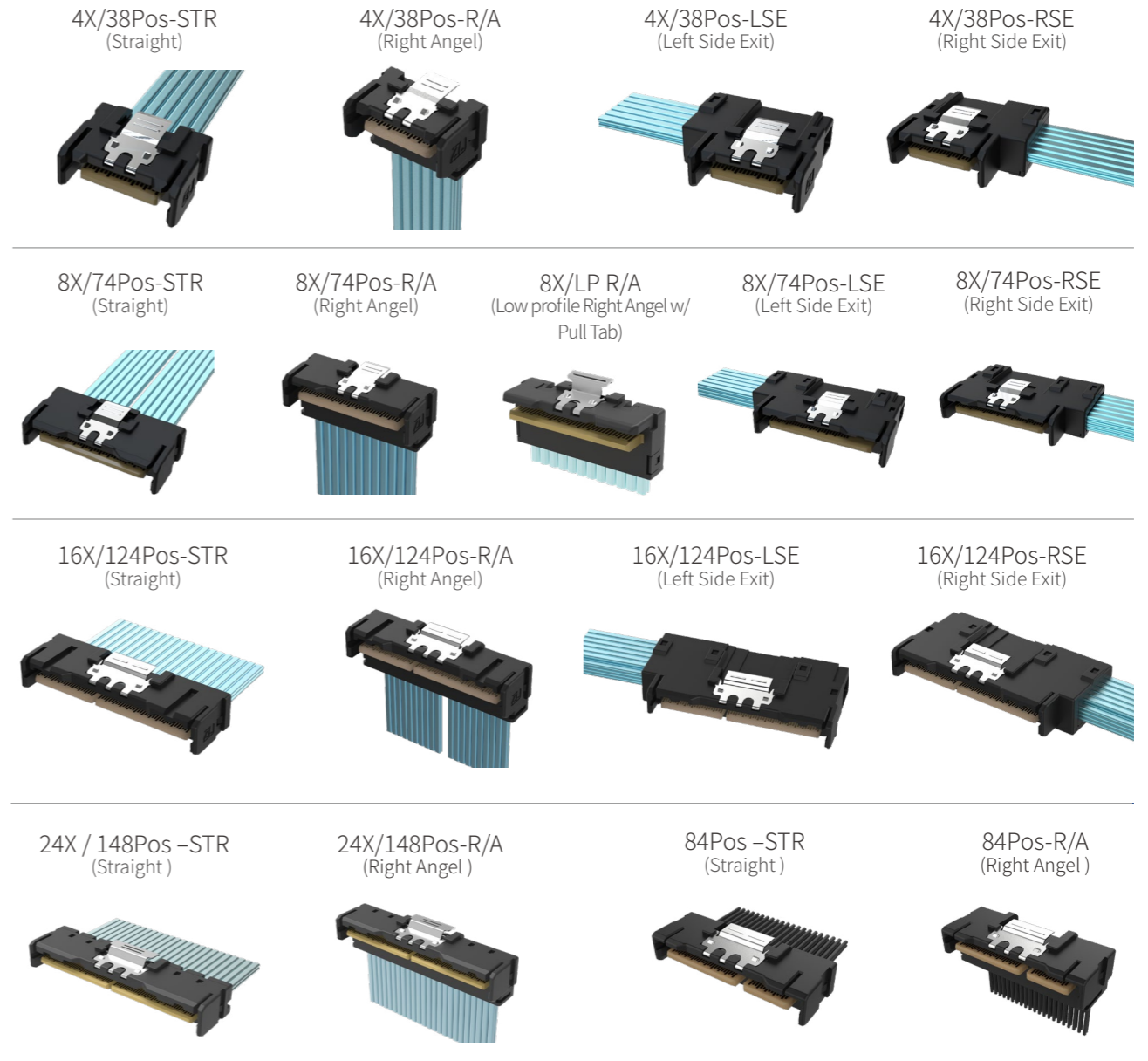
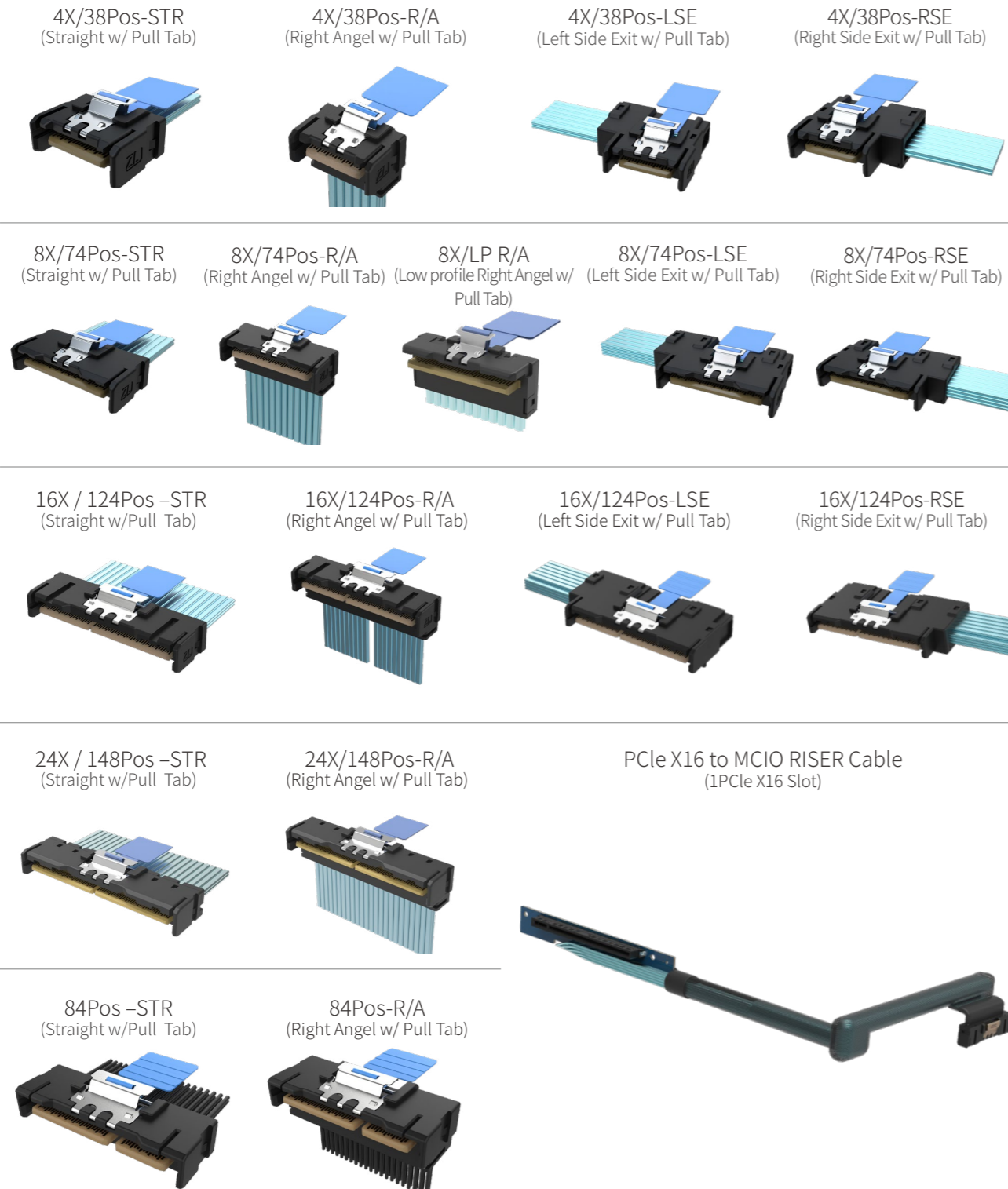
QSFP28 100G AOC	QSFP+ 40G AOC	SFP28 25G AOC	SFP+ 10G AOC
			

## Transceiver

QSFP28 100G SR8	SFP28 25G SR/LR	SFP+ 10G SR/LR
		

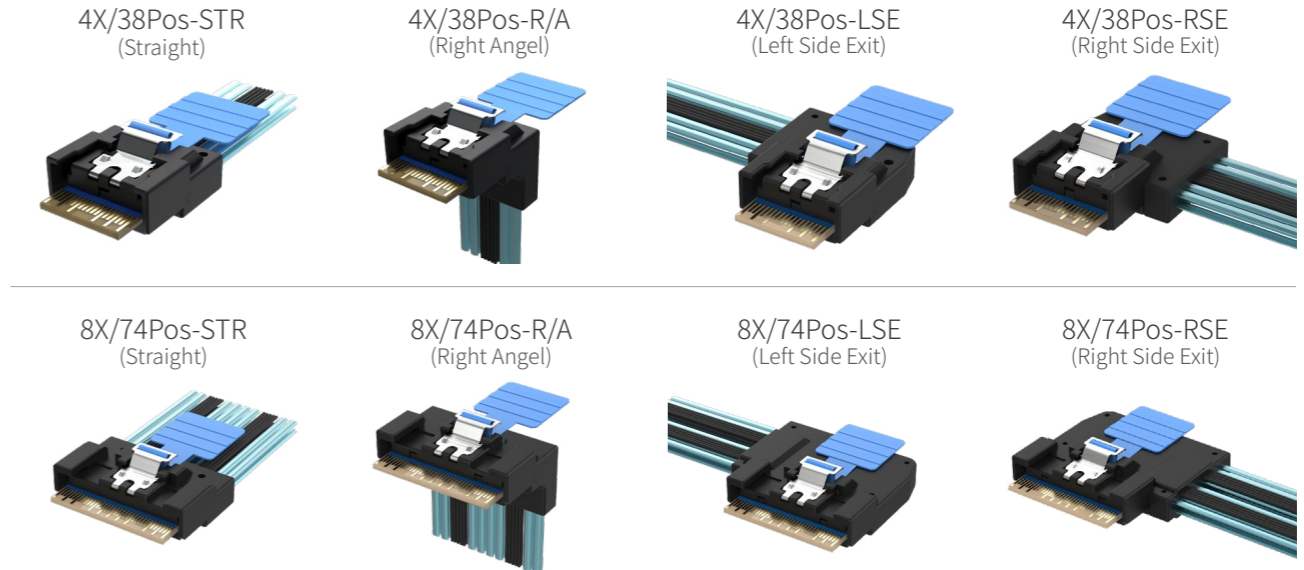
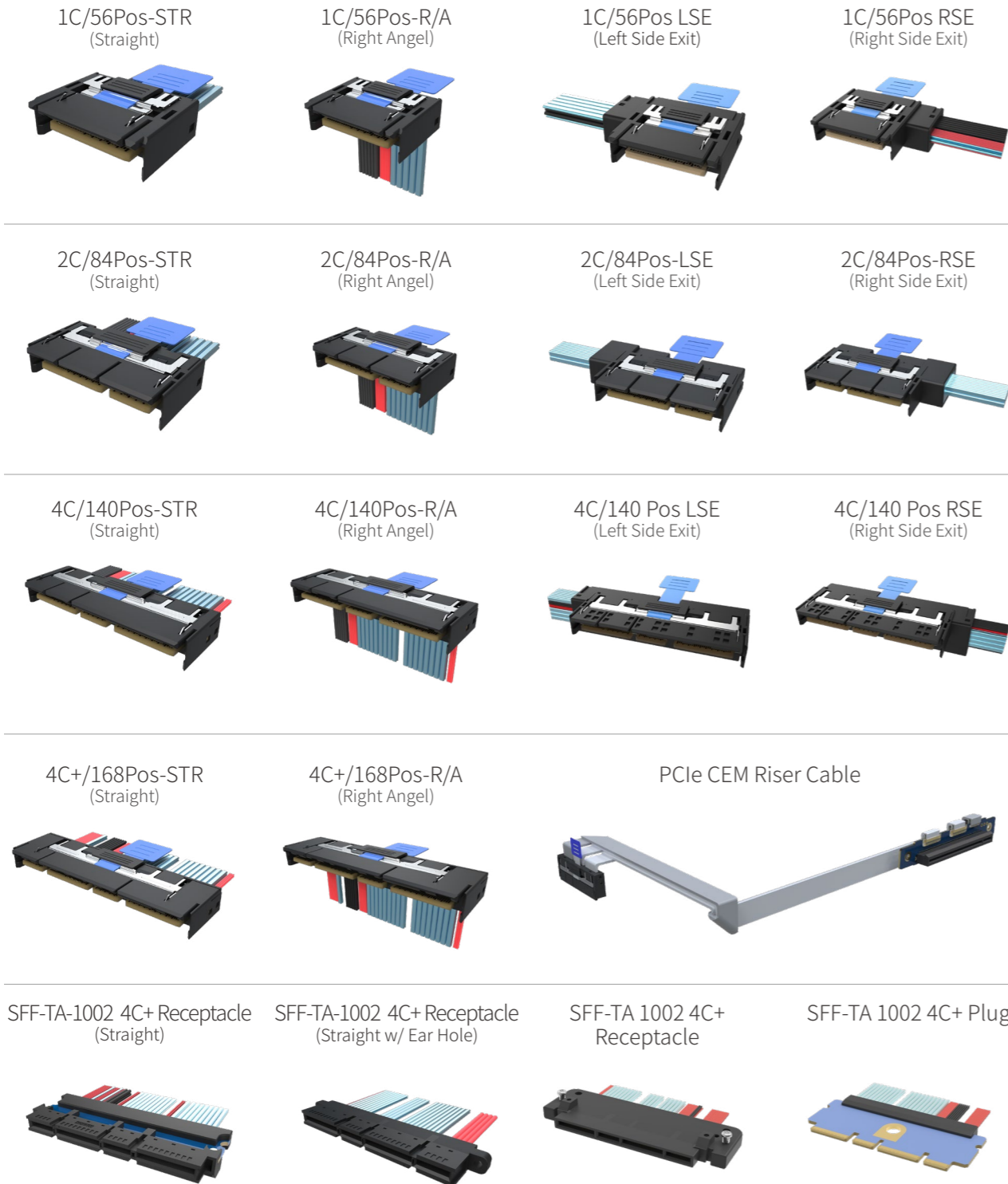
SFF-TA-1016 MCIO Cable Assembly (With Pull Tab Type)

SFF-TA-1016 MCIO Cable Assembly



SFF-TA-1020 Gen-Z Cable

SFF-8654 SlimSAS Cable (Pull Tab Type)



SFF-8654 SlimSAS Cable (Anti-Skew Mated)



# 内部高速线

Internal High Speed Cable

## PCIe 5.0 Riser Cable

OCSF Riser Cable



PCIe 5.0 X16 to GEN-Z4C

PCIe 5.0 X16 to MCIO 16X

PCIe 5.0 X16 to 2\*MCIO 8X

Weld Soldering Technology



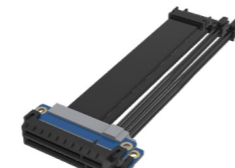
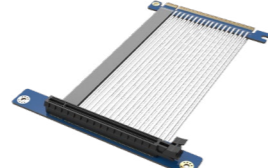
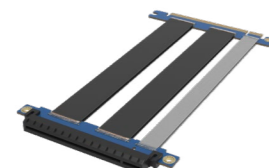
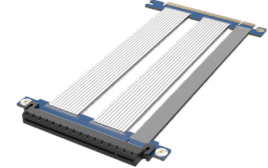
## PCIe Extender Cable

PCIe 5.0 X16 Riser Cable (Straddle, Twin-Ax)

PCIe 5.0 X16 Riser Cable (Straddle, FFC Type)

PCIe 5.0 X16 Riser Cable (Vertical, Twin-Ax)

PCIe 5.0 X8 Riser Cable (X8 to MCIO 8X w/ Power)

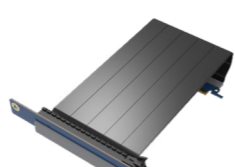
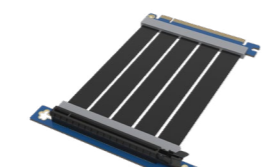
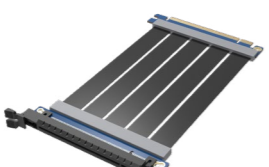
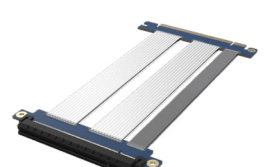


PCIe 4.0 X16 Riser Cable (Straddle, Twin-Ax)

PCIe 4.0 X16 Riser Cable (Straddle, One Layer FFC)

PCIe 4.0 X16 Riser Cable (Vertical, One Layer FFC)

PCIe 4.0 X16 Riser Cable (Reverse, One Layer FFC)



# 内部高速线

Internal High Speed Cable

## SFF-8654 SlimSAS Cable

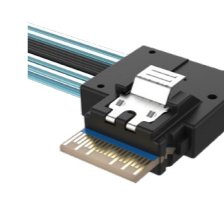
4X/38Pos-STR (Straight)



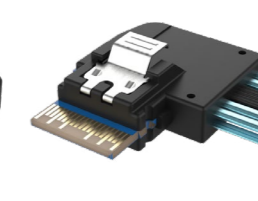
4X/38Pos-R/A (Right Angel)



4X/38Pos-LSE (Left Side Exit)



4X/38Pos-RSE (Right Side Exit)



4X/38Pos-RR/A (Reverse Right Angel)



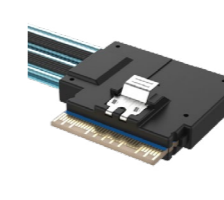
8X/74Pos-STR (Straight)



8X/74Pos-R/A (Right Angel)



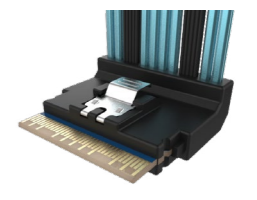
8X/74Pos-LSE (Left Side Exit)



8X/74Pos-RSE (Right Side Exit)



8X/74Pos-RR/A (Reverse Right Angel)



## Unshielded Mini SAS HD (SFF-8613/SFF-8643/SFF-8673)

HD 4i/36Pos-STR (Straight)



HD 4i/36Pos-R/A (Right Angel)



HD 4i/36Pos-LSE (Left Side Exit)



HD 4i/36Pos-RSE (Right Side Exit)



HD 4i/36Pos-RR/A (Reverse Right Angel)



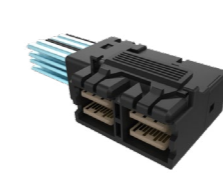
HD 8i/72Pos-STR (Straight)



HD 8i/72Pos-R/A (Right Angel)



HD 8i/72Pos-LSE (Left Side Exit)



HD 8i/72Pos-RSE (Right Side Exit)



HD 8i/72Pos-RR/A (Reverse Right Angel)





## 内部高速线

Internal High Speed Cable

### SFF-8087 Mini SAS Cable

Mini SAS 36Pos-STR (Straight)   Mini SAS 36Pos-R/A (Right Angel)   Mini SAS 36Pos LSE (Left Side Exit)   Mini SAS 36Pos RSE (Right Side Exit)   Mini SAS 68Pos-STR (Straight)   Mini SAS 68Pos-R/A (Right Angel)



### SATA / SAS / SFF-8639 SAS/PCIe

SFF-8639 / SFF-8482 Cable   SATA 7 Pin Straight   SATA 7Pin Right Angel   SATA 7 Pin Right Angel



## 成为世界先进的

BE WORLD ADVANCED DATA CABLES.DEDICATED CABLES

## 数据线缆、专用线缆和连接产品的

AND CONNECTION PRODUCTS DESIGN

## 设计与制造企业

AND MANUFACTURING ENTERPRISES

# 铜布线方案

Copper Cabling System

## COPPER SYSTEM

S-series Angle-type Empty Patch Panel



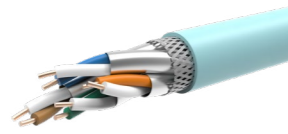
S-series Empty Patch Panel



E-series Empty Patch Panel



S/FTP CAT8



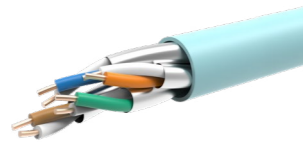
CAT8 Shielded Module



CAT8 MPTL



U/FTP CAT6<sub>A</sub>



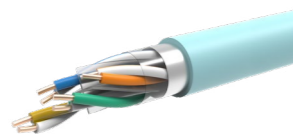
CAT6<sub>A</sub> Shielded Module



CAT6<sub>A</sub> Shielded MPTL



U/UTP CAT6<sub>A</sub>



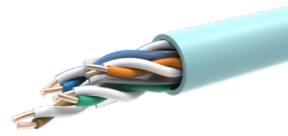
CAT6<sub>A</sub> Unshielded Module



CAT6<sub>A</sub> Patch Cord



U/UTP CAT6



CAT6 Unshielded Module



MicroLink™ CAT6 Patch Cord



U/UTP CAT5e



CAT5e Unshielded Module



CAT5e Patch Cord



# 光布线方案

Fiber Cabling System

## OPTICAL SYSTEM

MPO Trunk Cable



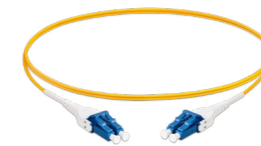
MPO Fan-out patch cord



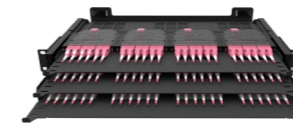
LC Patch Cord



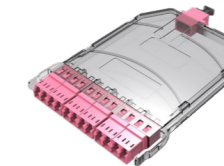
LC Patch Cord



HG MPO Shelf



HG MPO Cassette



HK MPO Shelf



HK MPO Cassette



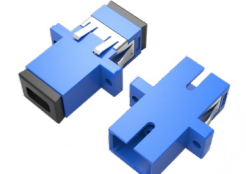
Optical Shelf



Optic Adapter



Optic Adapter





ZHEJIANG ZHAOLONG INTERCONNECT TECHNOLOGY CO.,LTD.  
高速互连事业部 /High Speed Interconnect B.G.  
浙江兆龙互连科技股份有限公司  
www.zhaolong.com.cn



股票代码 /Stock code: 300913

### 兆龙互连总部销售中心/Zhaolong's Headquarter(Sales Center)

地址：浙江省德清县科源路中科产业大楼B区9幢7楼  
ADD: 7th Floor, 9th Building, Zone B, Zhongke Industrial Building, Keyuan Road, Wukang Town, Deqing County, Zhejiang Province, China  
电话/TEL: 400-8877-125

### 杭州兆龙物联技术有限公司/Hangzhou Zhaolong IoT Technology Co., Ltd.

地址：浙江省杭州市余杭区龙舟路6号炬华智慧产业园1号楼8楼  
ADD: The 8th Floor, Building 1, Juhua Wisdom Industrial Park, No. 6, Longzhou Road, Yuhang District, Hangzhou City, Zhejiang Province, China

### 兆龙互连工程与制造中心/Engineering & Manufacturing Center

地址：浙江省德清县新市镇士林工业区  
ADD: Shilin Industrial Zone, Xinshi Town, Deqing County, Zhejiang Province, China  
邮箱/E-mail: info@zhaolong.com.cn

### 兆龙互连北京分公司/Zhaolong Interconnect's Beijing Branch

地址：北京市朝阳区劲松南路1号1幢4层445室502号  
ADD: No.502, Room 445, Floor 4, Building 1, No.1, Jinsong South Road, Chaoyang District, Beijing City, China

### 兆龙互连上海分公司/Zhaolong Interconnect's Shanghai Branch

地址：上海市杨浦区霍山路777号大连路壹中心大厦A座702  
ADD: Room 702, Building A, the One-Center Building, Dalian Road, No.777, Huoshan Road, Yangpu District, Shanghai City, China

### 兆龙物联深圳分公司/Zhaolong IoT's Shenzhen Branch

地址：广东省深圳市宝安区新安街道新合社区33区大宝路83号美生慧谷科技园春谷2栋4楼  
ADD: 4th Floor, Chungu Building 2, Meisheng Huigu Science and Technology Park, No.83, Dabao Road, District 33, Shanghe Community, Xinan Street, Bao'an District, Shenzhen City, Guangdong Province, China

### 兆龙物联合肥分公司/Zhaolong IoT's Hefei Branch

地址：安徽省合肥市庐阳区四里河路与潜山路交口万科中心1幢2406室  
ADD: Room 2406, Building 1, Vanke Center, intersection of Silihe Road and Qianshan Road, Luyang District, Hefei City, Anhui Province, China

### 兆龙物联苏州分公司/Zhaolong IoT's Suzhou Branch

地址：江苏省苏州市吴中区苏州工业园区苏州大道西2号11层1121单元  
ADD: Unit 1121, Floor 11, No.2 West Suzhou Avenue, Suzhou Industrial Park, Wuzhong District, Suzhou City, Jiangsu Province, China

### 兆龙互连台北办事处/Taipei Office

关注兆龙电商，专注服务中小客户

打开天猫/京东/淘宝app搜索

