

OPTICAL SYSTEM

Stock code: 300913

To be the world advanced data cables, special cables and interconnect products design&manufacturing enterprise



ABOUT ZHAOLONG

Established in 1993, ZHAOLONG has more than 24 years' experience in cable research and manufacture field. ZHAOLONG's research and manufacture base covers about 80000 m2 only for transmission and control cables. And there is more than 60,000 m2 on construction for further production expanding.

ZHAOLONG was certificated as Chinese National High-tech Enterprise, the R& D and manufacturing base for SECRI (Shanghai Electric Cable Research Institute), member of CCSA and ITSC (China Communications Standards Association/National Information Technology Standardization Committee), drafter of national standards for data cables. And now ZHAOLONG has about 30 national patents.

ZHAOLONG has a cooperation lab on data cables and assemblies with SECRI (Shanghai Electric Research Institute) and we work with the Materials Institute of Tsinghua University on the developments of new materials.

ZHAOLONG has taken part in drafting 6 national standards such as GB/T1801, GB/T21430, GB/T21204, etc. And Zhaolong also has taken part in revising international standards in the IEC (International Electrotechnical Commission) meetings.

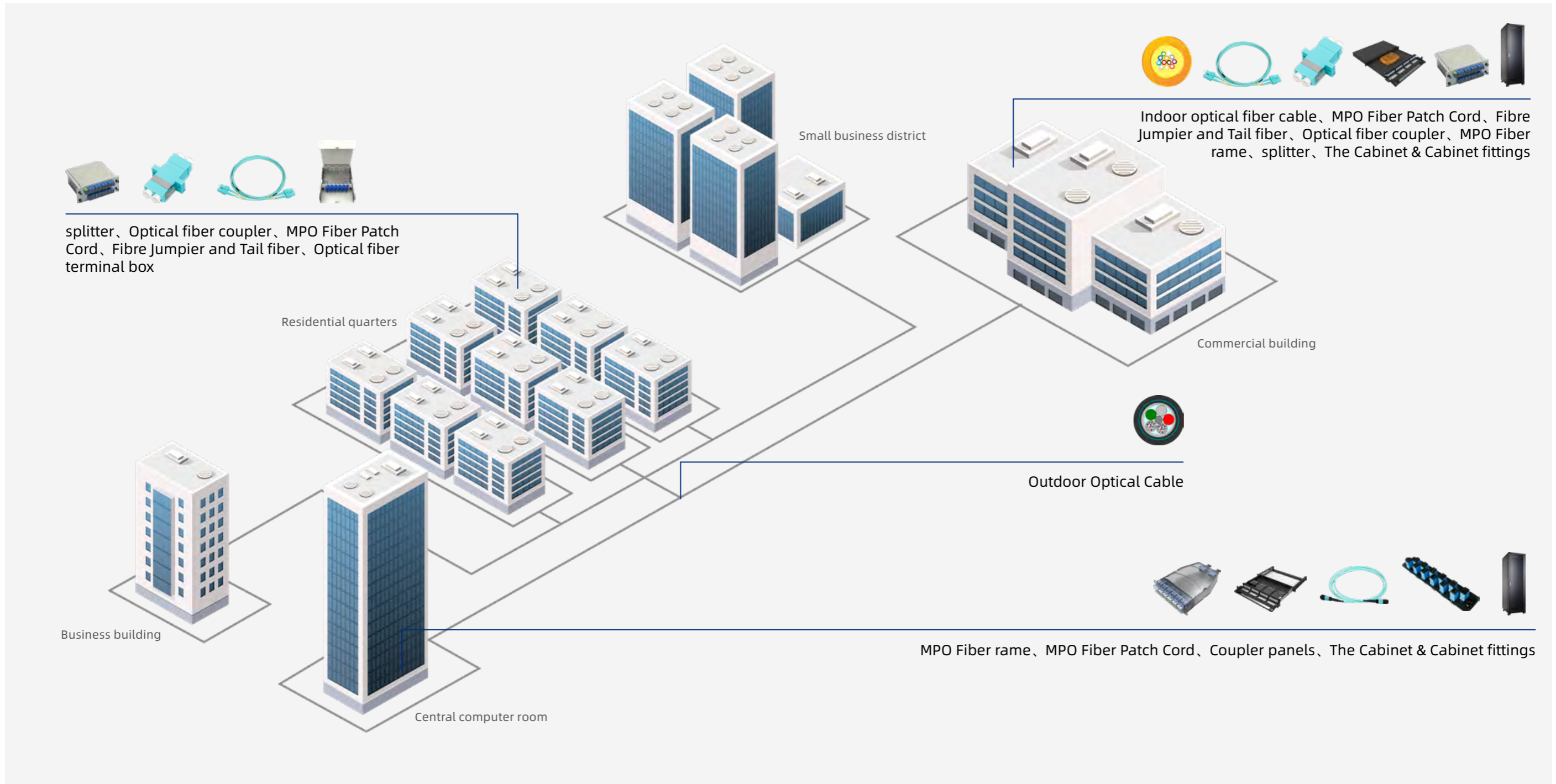
Zhaolong has got the recognition and certificates such as ISO 9001, ISO 14001 and OHSAS 18001. For these years since our establishment, ZHAOLONG has successively got the honors like Zhejiang Famous Brand, Trustworthy Enterprise, National High-tech Enterprise, Zhejiang High-tech Lab, Zhejiang Famous Export Brand, Zhejiang Green Enterprise, etc. And ZHAOLONG's lan cables have got the recognition and the certificates like UL, CPR, TLC, RoHS, REACH, ETL, CE, DELTA, ETC, CPR, etc. What's more, Zhaolong's industrial cables and high speed cables have got the UL recognition on safety and electrical performance as well as the RoHS and REACH recognition on the environmental compliance.

ZHAOLONG keeps up with the technological development, constantly improving our products. Zhaolong's cables and assemblies can be applied in many fields like data center, industry and medical treatment, high-end consumer electronics and smart home, etc. ZHAOLONG has more than 100000 cables and assembly products which are widely used in more than 100 countries.

- Focus ◆ Innovation ◆
- Quality ◆ Integrity ◆
- Fast ◆ Sustainable ◆

DATA CENTER SAN STORAGE LAN

HOST HOUSING DATA CENTER



FIBRE JUMPER AND TAIL FIBER



LC jumper/tail Fiber

Features
 Good interchangeability, Low insertion loss, low return loss, compliant with RoHS and REACH requirements. In accordance with IEC 61754-1, Telcordia GR - 326 - CORE standard

SC jumper/tail Fiber

Features
 good interchangeability, low insertion loss, plug - in connection, quick installation and removal, PC, APC grinding case complies with RoHS and REACH requirements. Comply with IEC 61754-4

FC jumper/tail Fiber

Features
 good interchangeability, low insertion loss, screw connection, mostly used for cabinet wiring, low insertion loss, low reflection Loss, APC grinding scheme to meet RoHS, REACH requirements. Comply with IEC 61754-13

ST jumper/tail Fiber

Features
 good interchangeability, low insertion loss, snap-type connection, quick installation and removal, low insertion loss, low reflection loss, comply with RoHS, REACH requirements. Also comply with IEC 61754-2

Fiber beam end

Features
 Low insertion loss, low reflection loss, comply with RoHS and REACH requirements. In accordance with IEC 61754-1, Telcordia GR - 326 - CORE standard

FIBRE JUMPER AND TAIL FIBER

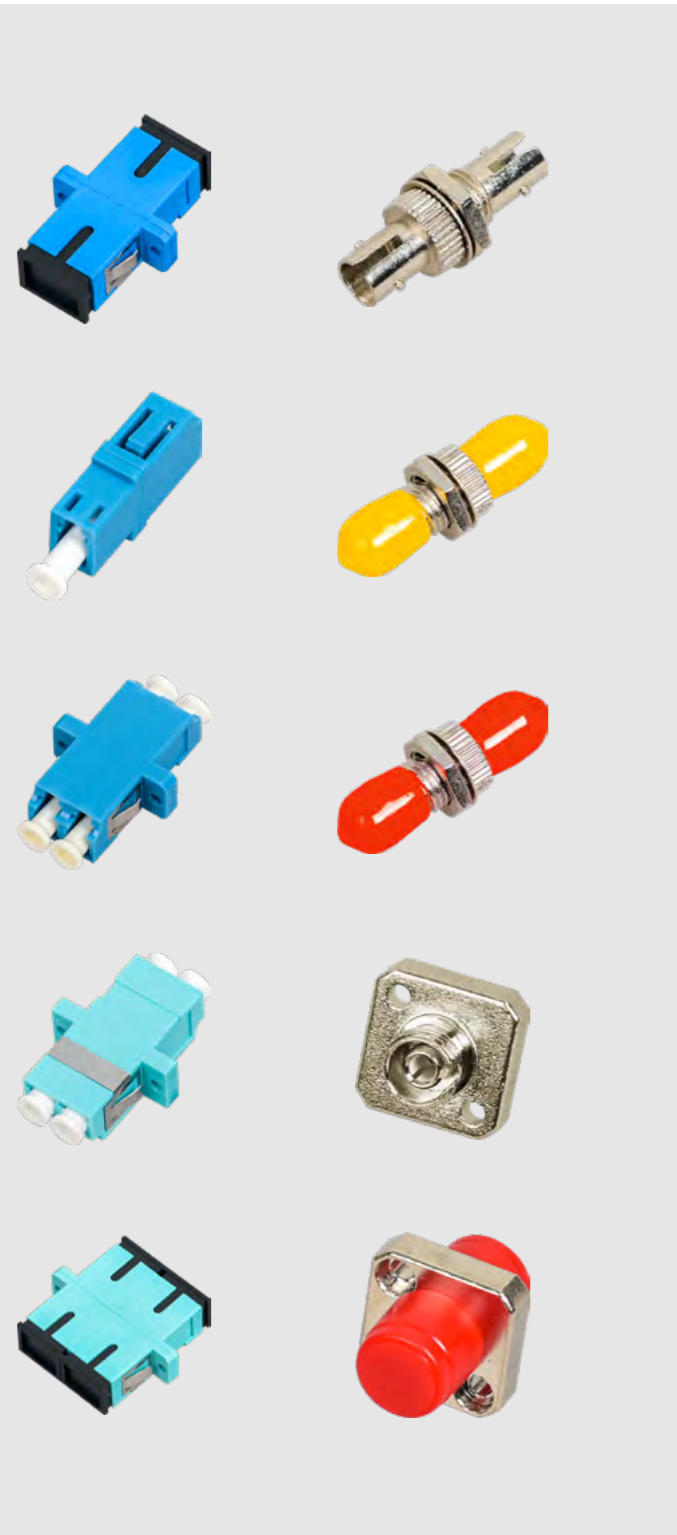


PERFORMANCE INDEX

Performance indicators	Single-mode		Multi-mode
	UPC	APC	UPC
Insertion Loss	≤ 0.3dB		≤ 0.5dB
Return Loss	≥ 55dB	≥ 60dB	---
Operating temp	-40~ +85° C		
Storage temp	-40~ +85° C		

A-terminal	B-terminal	Core	Cable diameter	Optical fiber core
SC/UPC	SC/UPC	Single	0.9mm	IEC B-652.D
SC/APC	SC/APC		2.0mm	IEC B-657.A1
FCU/PC	FCU/PC	Twin	3.0mm	IEC A1-OM3
FC/APC	FC/APC	12	5.0mm	
LC/UPC	LC/UPC	24	6.6mm	
LC/APC	LC/APC	36		
ST/UPC	ST/UPC			
Mu/UPC	Mu/UPC			

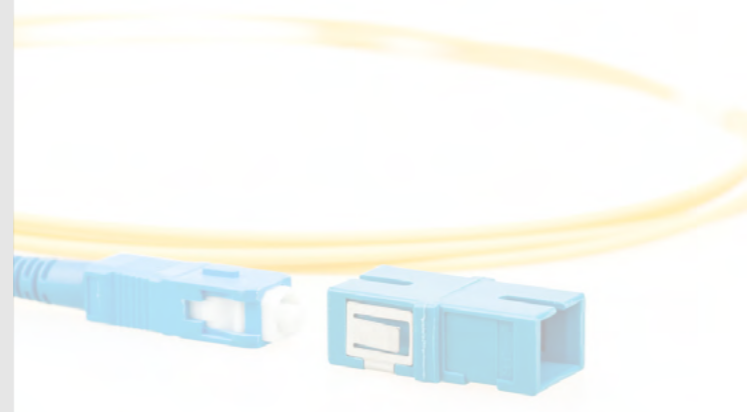
OPTICAL FIBER ACCESSORIES



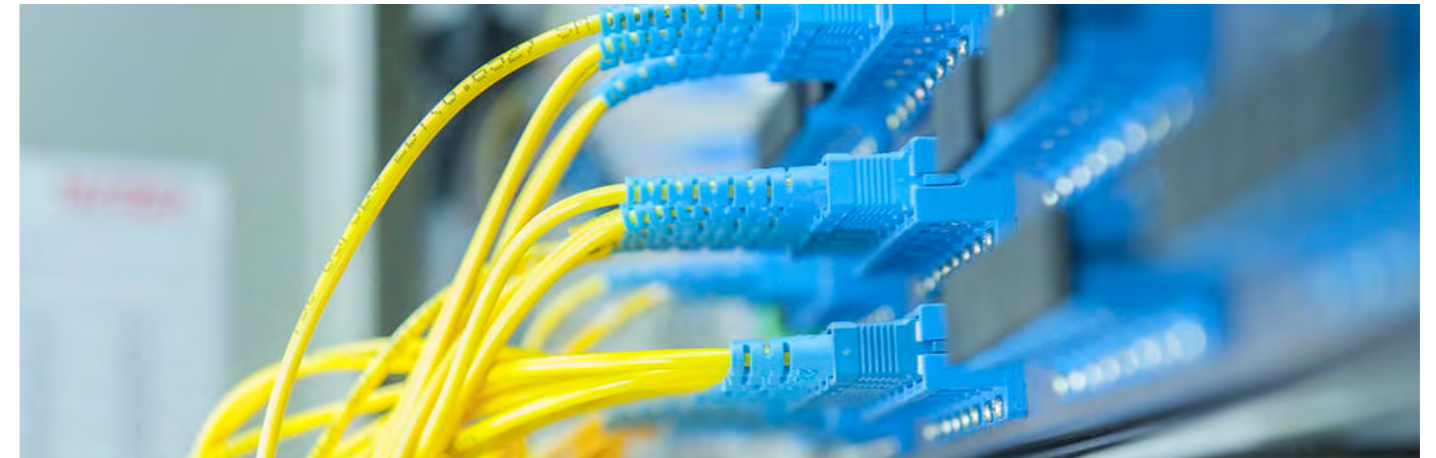
Optical fiber coupler

Features

1. Low insertion loss;
2. Ceramic sleeve, wear-resistant, good durability, in line with RoHS and REACH requirements. compliant with the Telcordia GR-326-CORE standards.



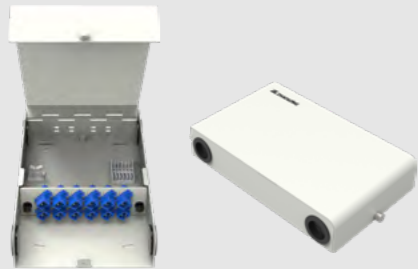
OPTICAL FIBER ACCESSORIES



Models	Specs
G960401-001	LC Single-mode simplex fiber coupler
G960401-002	LC Single-mode duplex fiber coupler SC
G960401-003	Single-mode simplex fiber coupler
G960401-004	Single-mode duplex fiber coupler
G960401-005	FC Single-mode simplex fiber coupler
G960401-006	LC Multimode OM2 simplex fiber coupler
G960401-007	LC Multimode OM2 duplex fiber coupler
G960401-008	SC Multimode OM2 simplex fiber coupler
G960401-009	SC Multimode OM2 duplex fiber coupler
G960401-010	FC Multimode OM3 simplex fiber coupler
G960401-011	LC Multimode OM3 simplex fiber coupler
G960401-012	LC Multimode OM3 duplex fiber coupler
G960401-013	SC Multimode OM3 simplex fiber coupler
G960401-014	SC Multimode OM3 duplex fiber coupler
G960401-015	FC Multimode OM3 simplex fiber coupler

OPTICAL FIBER ACCESSORIES

OPTICAL FIBER ACCESSORIES



G960407-001
PLC box divider



G960407-002
Patch Board



G960407-003
Micro optical splitter

Fiber distribution frame

Features

1. High density, large capacity
2. Flexible configuration, simple installation and easy maintenance, comply with RoHS and REACH requirements. Comply with YD/T 778-2011 standard

Optical fiber terminal box

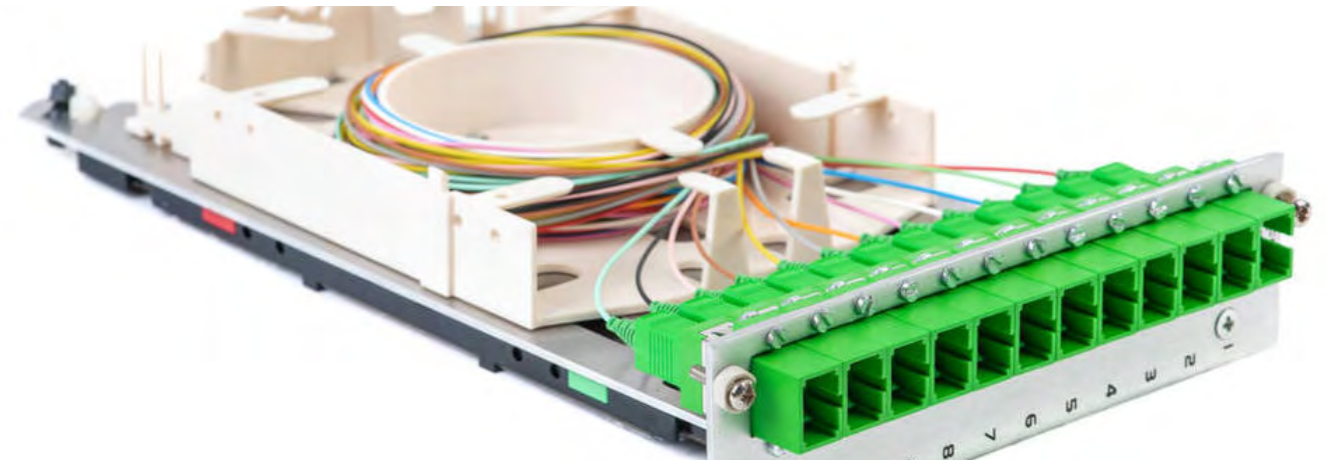
Features

high quality cold-rolled plate, durable, surface electrostatic spraying treatment, in line with RoHS, REACH requirements. Comply with the YD/T 778-2011 standard

Optical fiber splitter

Features

small volume, wide working wavelength range, high reliability, good spectral uniformity, etc Single device branch channel, up to 1 x 64 channels

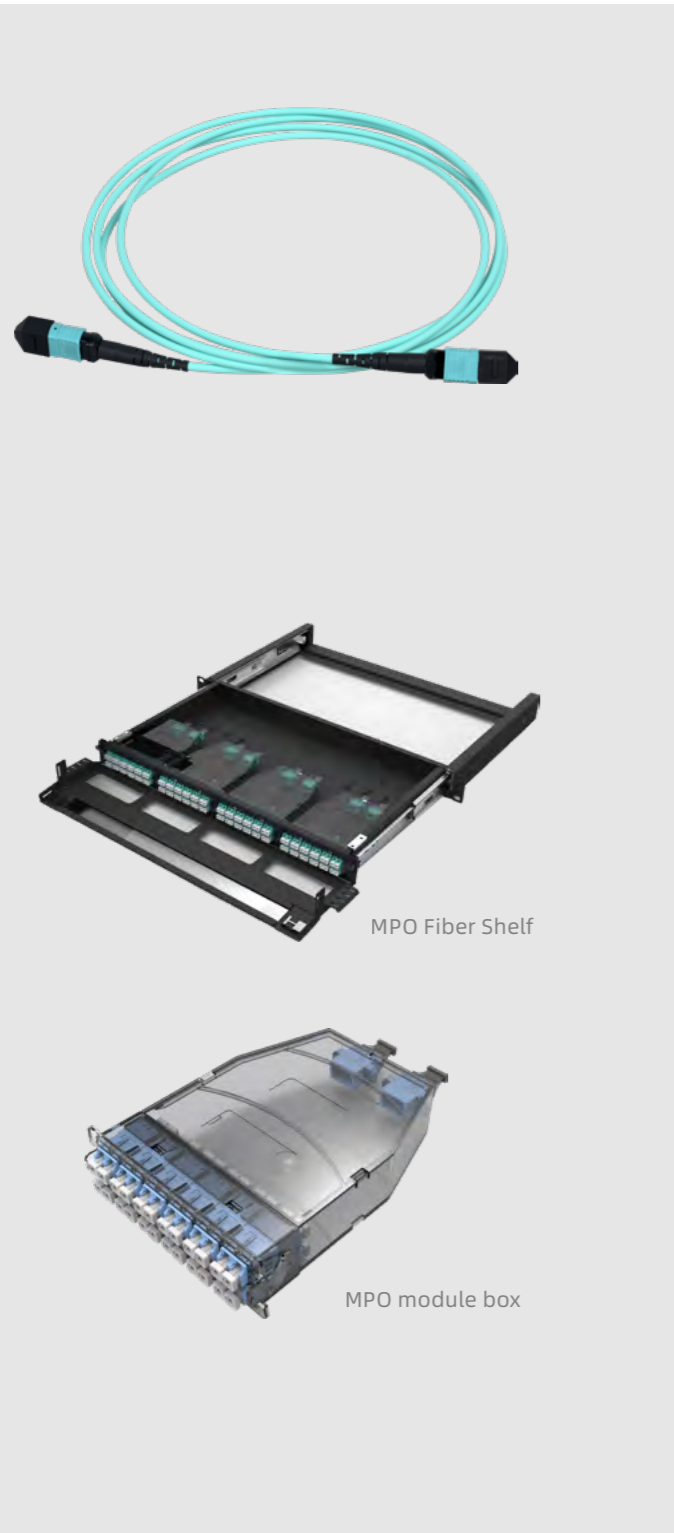


FIBER DISTRIBUTION FRAME

Models	Specs
G960403-001	fixed optical fiber distribution frame, including molten fiber plate, without coupler and panel
G960403-002	drawer type optical fiber distribution frame, including melt fiber tray, excluding coupler and panel
G960403-003	ODF fiber distribution frame, including coupler, including tail fiber

OPTICAL FIBER TERMINAL BOX

Models	Specs
G960403-001	4-port SC/LC optical fiber terminal box, without coupler
G960403-002	8-port SC/LC general purpose optical fiber terminal box without coupler
G960403-003	12-port SC/LC general purpose optical fiber terminal box without coupler



MPO Fiber Patch Cord

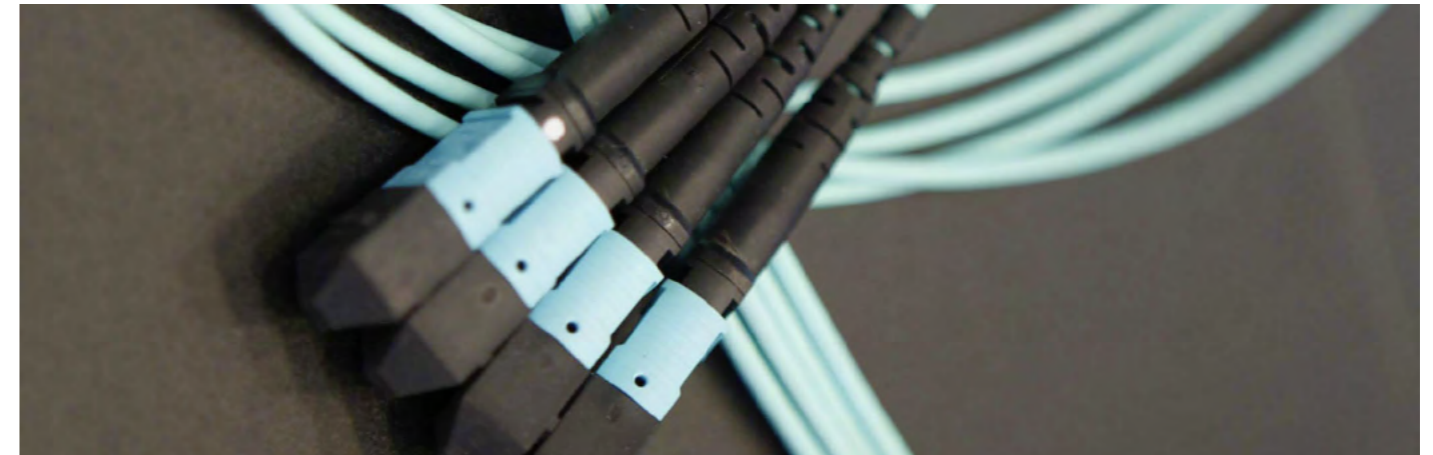
- Features**
1. High-density application, greatly reducing network management and maintenance costs;
 2. Ok, comply with RoHS and REACH requirements. Comply with IEC 61754-1, IEC 61754-7

MPO FIBER FRAME

- Features**
1. High quality cold-rolled plate, durable, surface electrostatic spraying treatment
 2. High density application
 3. Modular structure
 4. Guide rail pull-out structure, convenient and secure, Comply with RoHS and REACH requirements

MPO Fiber Shelf

MPO module box



PERFORMANCE INDEX

Insert core type	Single-mode Premium	Single-mode Standard	Multi-mode Premium	Multi-mode Standard
IL (dB)	<0.35	<0.75	<0.35	<0.6
RL (dB)	>60	>60	>20	>20
Polarity	A, B, C			
Cores	8, 12, 24, Bare fiber band/band			
Operating Temp	-40~+75° C			

MPO FIBER PATCH CORD

Models	Specs
G960503-001	SM 8 core MPO -8 core MPO main cable, LSZH(332-1), 5m
G960503-002	OM3 12 core MPO -12 core MPO main cable, LSZH(332-1), 5m
G960504-001	SM 8-core MPO (female head) -4LC double-fan outlet jumper, LSZH (332-1)5m
G960504-002	OM3 12-core MPO (female head) -6LC double-fan outlet jumper, LSZH (332-1)5m
G960504-003	SM 8F 4LC dual -4LC dual cluster jumper, LSZH (332-1) 5m
G960504-004	OM3 12F 6LC Double-6LC Double-6LC jumper, LSZH (332-1)5m

MPO FIBER FRAME

Models	Specs
G960501-001	OM3 UPC 12 core MPO Module, Male 12F(1MPO-4LC twin)
G960502-001	19" ,High density MPO distribution box (empty), 4 X 24-core modules can be installed, Maximum capacity: 96 core, 1Ux482x385 (mm)

OPTICAL CABLE



Indoor optical fiber cable

Features

1. Compact structure, small volume, light weight;
2. Small bending radius, excellent tensile strength, compliant with RoHS and REACH

Outdoor Optical Cable

Features

1. Good mechanical properties and temperature characteristics
2. Good compression resistance, water resistance and flexibility, compliant with RoHS & REACH requirements. Also comply with IEC 60794-3 standards.

INDOOR OPTICAL FIBER CABLE

Models	Specs
G960201-001	2-core bunched indoor single-mode optical cable, OS2 (9/125um) , PVC
G960201-002	4-core bunched indoor single-mode optical cable, OS2 (9/125um) , LSZH
G960201-003	6-core bunched indoor single-mode optical cable, OM3 (50/125um) , LSZH

OUTDOOR OPTICAL CABLE

Models	Specs
G960202-001	4 - core GYXTW central beam tube outdoor single - mode fiber optic cable, OS2 (9/125um)
G960202-002	12 - core GYTA laminated outdoor single - mode fiber optic cable, OS2 (9/125um)
G960202-003	24 - core GYTS laminate outdoor single - mode fiber optic cable, OS2 (9/125um)
G960202-004	24 - core GYTA53 - laminate outdoor single - mode cable, OS2 (9/125um)

THE CABINET



The cabinet

Features

exquisite design, high precision size; High precision arc mesh, increase air flow and reliability, comply with RoHS, REACH requirements. Comply with IEC 297-2 standard



Cabinet fittings

Models	Specs
G960701-001	600*600*2000 (42U) mm, Static load: 800kg, including 2 pallets, Front glass back mesh



ZHEJIANG ZHAOLONG INTERCONNECT TECHNOLOGY CO.,LTD.
www.zhaolong.com.cn

ZHAOLONG
STOCK CODE : 300913

zhaolong Interconnect总部销售中心

ADD: 9th floor,Zhongmao Building,Yong'an Street,
Wukang,Deqing, Zhejiang
TEL : 0086-572-8066838
E-mail : info@zhaolong.com.cn

Shanghai Innovation & Marketing Center

ADD: Rm 401, Fuhua Technology Building
No.525 Guoquan Road, Shanghai

Zhaolong IoT Technology

ADD: Room 1103, Yuhang Chamber of Commerce Building B,
Yuhang District, Hangzhou

Engineering & Manufacturing Center

ADD: Shilin Industry Zone, Xinshi, Deqing, Zhejiang

Hangzhou Research Institute

ADD: Room 1003, Building H, No. 198 Aicheng Street,
Yuhang District, Hangzhou City

zhaolong Interconnect Taipei R & D Center

ADD: 2nd Floor, No. 42-5, Section 2, Chang'an East Road, Taipei City